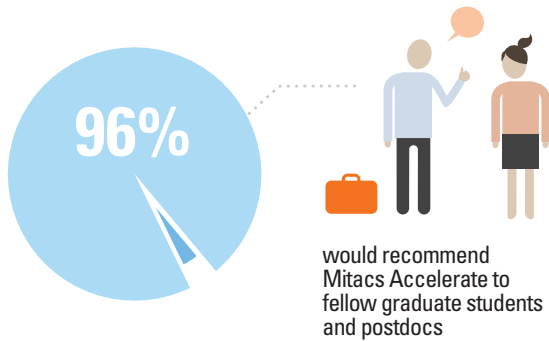
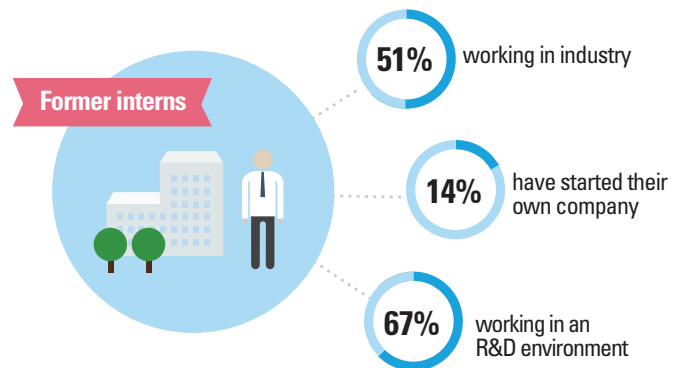
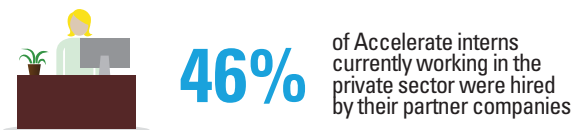


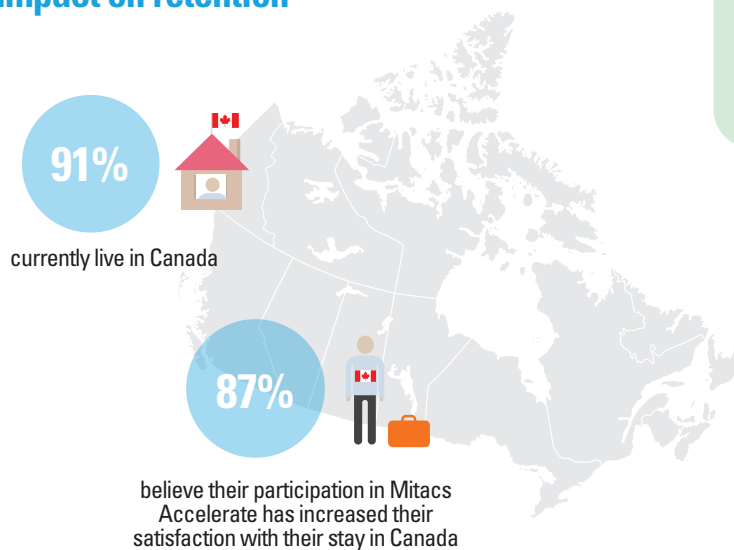
## 1 Impact on academic experience and skill development



## 2 Impact on employment



## 3 Impact on retention



**Did you know?**

Results suggest that Mitacs Accelerate is responsible for the creation of **200** new R&D jobs annually.

### ABOUT THE SURVEY

The survey was available online from October 31st to November 29th, 2013. 686 former interns from 9 provinces and 44 Canadian universities responded to the survey, an overall response rate of 27%.

[www.mitacs.ca](http://www.mitacs.ca) [evaluation@mitacs.ca](mailto:evaluation@mitacs.ca)