



**Mitacs**

**CANADIAN  
SCIENCE POLICY  
FELLOWSHIP**



# **BRINGING SCIENCE AND POLICY TOGETHER**

**This competitive fellowship integrates academic research and evidence-informed policy-making by embedding PhD holders into federal and provincial government host offices. Fellows' skills, expertise and research experience is applied to the host offices' policy issues to create better public policy for Canadians.**

# CSPF PROGRAM HIGHLIGHTS

- ✓ 12-month immersive fellowship in a host government office
- ✓ Salary range is \$70,000 to \$80,000 per year
- ✓ Applications open November 27, 2019 and close on February 5, 2020
- ✓ Must be a Canadian citizen or permanent resident to apply
- ✓ Open to all disciplines
- ✓ PhD required



**PAST  
FELLOWSHIPS  
INCLUDE...**





## UNDERSTANDING HUMAN ENHANCEMENT TECHNOLOGY FOR SOLDIERS

### the **FELLOWS**

Expertise in neuroscience, physiology, cognition, and ethics

### the **ISSUE**

Understanding policy issues and risks that may arise from emerging and disruptive technologies for soldiers

### the **OUTCOME**

Provide DRDC with a view of the ethics and policy landscape pertaining to globalization and technologically-enhanced future capabilities through cognitive, robotic, and physiological methods



## GLOBAL ALLIANCE FOR HIGH CONTAINMENT BIO-THREATS

### the **FELLOW**

Microbiology expert and former World Health Organization intern

### the **ISSUE**

Taking a leadership role in an international biosafety network, a global alliance working to strengthen international response and protocols to high-consequence diseases

### the **OUTCOME**

Training gap analysis report, operational capability and competency matrix, preparation of best practices process map, and an emergency communications protocol





## ADVANCING PLANT HEALTH PRIORITIES FOR THE CANADIAN PLANT HEALTH COUNCIL

### the **FELLOW**

A biologist with a diverse background in plant physiology, phytochemistry, and molecular biology

### the **ISSUE**

Identifying ways to improve uptake of voluntary biosecurity measures to preventing plant pests from crossing borders

### the **OUTCOME**

An assessment of the awareness and uptake of biosecurity resources and programs amongst growers and the general Canadian public





## COLLABORATING WITH INDIGENOUS COMMUNITIES ON FOREST MANAGEMENT

### the **FELLOW**

Ecologist focused on integrating Indigenous knowledge

### the **ISSUE**

How to develop partnerships that build capacity for incorporating Indigenous knowledge into forest resource management in British Columbia

### the **OUTCOME**

A framework to encourage increased adoption of traditional ecological knowledge into existing resource management frameworks, and develop stronger relationships with Indigenous communities



A map of British Columbia, Canada, showing a seismic event. Concentric circles representing seismic waves emanate from a point near Port Alice. Two callout boxes point to 'PORT ALICE' and 'CAMPBELL' on the coast. The word 'EARTHQUAKE' is written in large white letters on a red background at the bottom left.

PORT ALICE

CAMPBELL

## INFORMING THE RESPONSE PRIORITIES FOR BC'S EARTHQUAKE EARLY WARNING SYSTEM

### the **FELLOW**

Civil engineer with a focus on assessing water infrastructure

### the **ISSUE**

How to prioritize infrastructure assets when reacting to an earthquake early warning (EEW) system in the event of a major earthquake

### the **OUTCOME**

Recommendations to inform the technological development of the EEW and the subsequent infrastructure management responses it triggers

**EARTHQUAKE**



## HOW TO PLAN LONGTERM FOR CLIMATE CHANGE

### the **FELLOW**

Expert researcher focused on managing environmental and social issues related to climate change and future thinking by decision makers

### the **ISSUE**

Planning for climate change can be overwhelming and decision makers may not know where to start to protect local agriculture

### the **OUTCOME**

The introduction of the pathways approach as a framework to support long-range planning and highlight agriculture as a sustainable means of local food production



A woman with blonde hair, wearing a light-colored jacket and a patterned backpack, stands in a library aisle. She is looking at a tall bookshelf filled with books. The aisle is narrow, and the bookshelves are filled with books of various colors. In the background, there are more bookshelves and a large window with a painting of a landscape. A yellow paper lantern hangs from the ceiling.

## APPLYING BEHAVIOURAL SCIENCE TO INCREASE USE OF PUBLIC SERVICES

### the **FELLOW**

Expert in visual attention and long-term memory with expertise in psychology, neuroscience, and human behavior

### the **ISSUE**

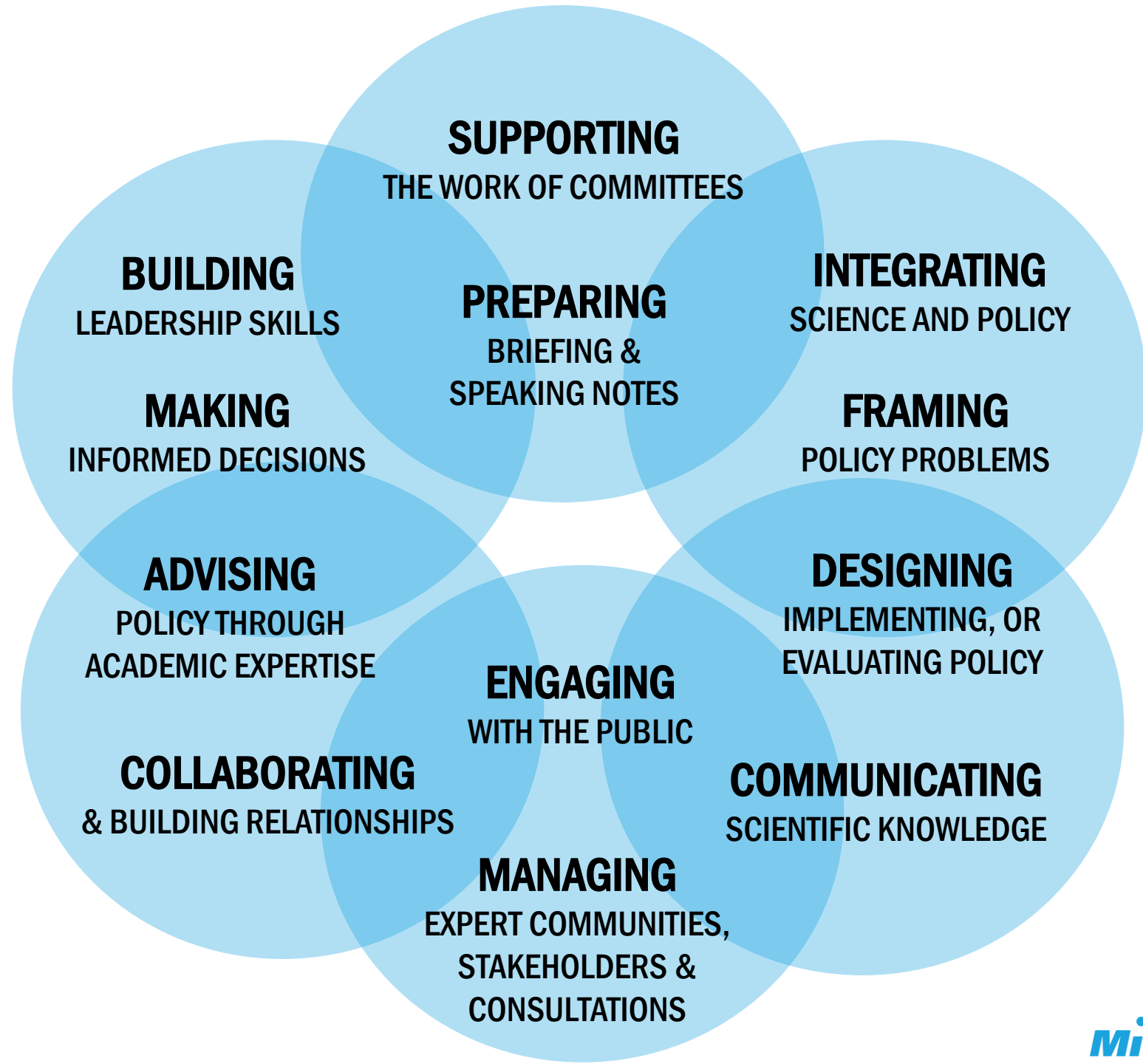
Citizens don't always take advantage of, or understand, available provincial services or regulations, e.g. a business owner is confused about paying taxes and misses the deadline

### the **OUTCOME**

Recommendations for evidence-informed solutions that foster uptake of, and compliance with, provincially managed services



**FELLOWS  
GAIN SKILLS  
THAT IMPACT  
THEIR  
CAREERS,  
KNOWLEDGE,  
AND  
NETWORKS**







DON'T  
TAKE  
OUR  
WORD  
FOR IT...

*"I have absolutely loved my experience. It has definitely allowed me to advance my career in a direction that I would not have been able to go had I not been accepted into the program."*

**2016-17 Canadian Science Policy Fellow**

*"The Mitacs Canadian Science Policy Fellowship is an invaluable program to attract highly qualified personnel to the Government of Canada. CFIA has now hosted 9 fellows in 3 years. We view the program as a mutually beneficial way to introduce critical food safety, plant health and animal health government functions to those with roots in academia. In return, we have been rewarded with talented, highly motivated, natural leaders who continue to make valuable contributions."*

**3-time Canadian Science Policy Fellowship Host**



# APPLY NOW!

[www.mitacs.ca/policy](http://www.mitacs.ca/policy)